



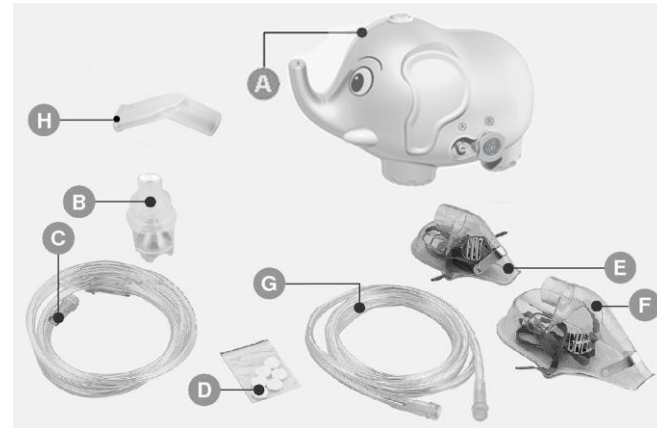
**BABYBELLE**

**NEBULIZER  
MODEL:BBN05-1**

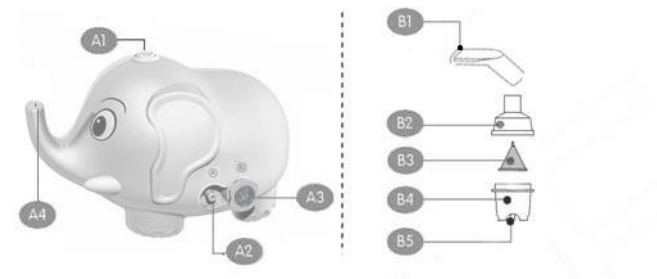


**INSTRUCTION MANUAL**

**KNOWING THE NEBULIZER SET**



- A. Nebulizer (Main Unit)**
- B. Nebulizer Cup Set**
- C. Air Tubing (Transparent Green)**
- D. Filters (x 5)**
- E. Child Mask (Optional)**
- F. Adult Mask (Optional)**
- J. Air Tubing (Transparent Green)(Optional)**
- K. Mouth Piece**



**A. Nebulizer (Main Unit)**

- A1. Power On/ Off Switch
- A2. Air Outlet Connector
- A3. Filter Cover (Air Filter + Inlet Connector)
- A4. Nebulizer Kit Holder

**B. Nebulizer Accessories Set (with Mouth Piece)**

- B1. Mouth Piece
- B2. Nebulizer Cap
- B3. Conical
- B4. Nebulizer Cup
- B5. Air Tube Connector

## SAFETY INFORMATION

This nebulizer is a medical device. Only use medications as prescribed and instructed by your doctor.

When using electrical appliances, basic safety precautions should always be followed including the following:

### **▲ DANGER –To reduce the risk of electric shock**

Do not use the nebulizer while bathing.

Do not place or store the nebulizer where it can fall or be pulled into a tub or sink.

Do not place in or drop into water or other liquids.

Do not reach for the nebulizer that has fallen into water. If so ,unplug immediately.

### **▲ Warning –To reduce the risk of injury**

- NEVER leave the nebulizer unattended when plugged in.
- DO NOT leave the nebulizer unattended with people who require supervision.
- Use the nebulizer ONLY for its intended use as described in this manual. Use ONLY with the supplied nebulizer accessories or accessories recommended by Babybelle.
- Close supervision is necessary when any appliance is used near children or incapacitated persons.
- NEVER operate the nebulizer if it has a damaged cord or plug, return the nebulizer to the nearest Authorized Service Centre for examination, repair or mechanical adjustment.
- NEVER touch the nebulizer when your hands are wet or moist, as the nebulizer is not protected against water penetration. DO NOT use the nebulizer while you are in the bath or having a shower. Never immerse the nebulizer in water. In case this accidentally occurs, always first disconnect the power supply plug from the wall socket before reaching for the unit. After removing the nebulizer from water, do not use it again. Return the nebulizer to the Authorized Service Centre and have the nebulizer checked.
- The nebulizer does not contain any user serviceable parts and does not require oil. Do not attempt to lubricate any internal parts. Any servicing should be performed by the authorized service representative.
- Always place the nebulizer on a plain and stable surface during operation.
- DO NOT expose the nebulizer to sources of heat such as radiator or sun shining through a window.
- DO NOT let the cord contact any hot surface.
- DO NOT use an extension cord.
- NEVER block the air vents on the left/right side of the nebulizer or place it where the vents may be blocked. Make sure there is at least 15cm (6 in) clearance on all sides of the unit during the operation. Also keep the air vents free of lint, hair, etc.
- NEVER use the nebulizer while sleeping or drowsy.
- NEVER drop or insert any object into the open holes of the nebulizer.
- DO NOT use outdoors. The nebulizer is for indoor use only.
- DO NOT use the nebulizer in an oxygen enriched environment.
- DO NOT operate the nebulizer while it is enclosed in a carrying case or bag.
- The nebulizer has been designed for intermittent use 30 minutes On, 10 minutes Off.
- Unplug in the nebulizer from outlet when not in use, before cleaning or changing accessories.
- For medication, please follow the instructions of your doctor or respiratory therapist.
- ALWAYS turn the nebulizer off before filling the nebulizer cup with medication.
- Although the device fulfills provisions of the EMC (Electromagnetic Compatibility) directive, using it in close vicinity of other devices should be avoided.
- If the device abruptly stops operating, check that the power cord connection is secure. Also see note in "SERVICE AND CUSTOMER CARE" section.
- Specification regarding output, output rate and particle size may vary depending on the type of medication used (especially for suspensions and high viscosity medications). See drug supplies data sheets for further details.

**Warning:** 1. The child must not be left alone with the device.

2. This product is not suitable for use in anaesthetic breathing systems or lung ventilator breathing systems.

3. Performance information provided in manuals of this product may not apply to drugs supplied in suspension or high viscosity form. In such case, information should be sought from the drug supplier.

4. The use of ACCESSORIES, transducers and cables other than those specified, with the exception of transducers and cables sold by the manufacturer of the EQUIPMENT or SYSTEM as replacement parts for internal components, may result in increased EMISSION or decreased IMMUNITY of the EQUIPMENT or SYSTEM.

## INTENDED FOR USAGE

This product is only suitable to alleviate the pain suffered from upper respiratory disease.

### • Nebulizer Accessory Set

- Nebulization treatment : Following prescription from doctor, use bronchus soothing dose or phlegm reducing dose.
- Nasal cavity moistening : To facilitate the flowing out the nasal mucus.
- Suction Bottle Set
  - Design for safe and moderate use, solve the snot problem of baby.
  - Suck out the snot from the nasal cavity of baby before feeding.
  - To avoid swelling the nasal mucus and causing pharyngitis and lower respiratory tract infection, suck out the nasal mucus before sleeping.
- Nasal Spray Bottle Set
  - Use saline solution to spray the nasal cavity to clean out the dust and restore the normal functioning of nasal mucosa.
  - When changing diapers, use clean warm water to spray wash the skin to avoid rashes caused by wiping using tissues.
  - Use saline solution to clean the wounds and help to heal the wounds.

## BEFORE PLUGGING IN THE NEBULIZER

- DO NOT plug the nebulizer in before making sure that the electrical rating shown on the rating plate on the bottom of the nebulizer is the same as the mains.
- The lead of this product is fitted with a non-rewireable plug. In the event that the plug does not fit for the power sockets, an adaptor must be used.

## PREPARING THE NEBULIZER FOR USE

- Unpack all parts of the nebulizer from the packing and remove all plastic bags.
- Prior to use, clean and disinfect the nebulizer kit and applicable inhalation attachments before using it. It is also recommended that the user repeat the process if the nebulizer has not been used for more than one week.

NOTE: For directions on cleaning and disinfecting the parts of the nebulizer, refer to the "CLEANING" and "DISINFECTION" sections in this instruction manual. Always check to ensure the nebulizer is fitted with a filter before use and also ensure the filter is not clogged (dirty) before operating the nebulizer.

## INHALATION (NEBULIZER KIT)

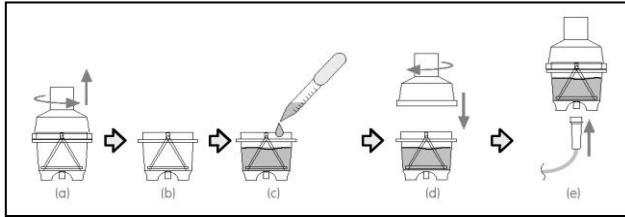
NOTE: Do not operate the nebulizer without a filter or when the filter is dirty. Operating the nebulizer with a dirty filter can impair proper operation and cause damage that is not covered by the warranty. Refer to the "REPLACING THE FILTER" section for details.

1. Check the nebulizer cup if there is any damage before each use (the nebulizer cup is disposable and should be replaced regularly).
2. Place the nebulizer on a firm flat surface near an electrical outlet and in an area where you can sit comfortably and the controls can be easily reached during the treatment.
3. Make sure the power switch is turned off before you connect it to power outlet.
4. Wash your hands before preparing the medication.
5. Connect one end of the Air Tubing to the Air Outlet Connector "A2" (Below the mark **A** on the nebulizer and ensure tubing is securely attached to the nebulizer to obtain proper operation/ treatment.)

NOTE: Make sure that the Air Tubing is connect to Air Outlet Connector marked **A**

6. Rotate the nebulizer cap counter-clockwise from the nebulizer cup and lift the nebulizer cap out of cup .
7. With the conical in the nebulizer cup, add the correct amount of prescribed medication to the nebulizer cup and reassemble the nebulizer .
8. Connect the remaining end of the air tubing to the bottom of the nebulizer cup.
9. Attach one of the following inhalation attachments to the nebulizer cup.
  - The mouthpiece "B1".
  - Adult mask "F"
  - Child mask "E"
12. Switch on the nebulizer by pressing the On/Off switch "A1".

13. Begin treatment
  - a. If a mouthpiece is used, place the mouthpiece between your teeth. With your mouth closed, inhale deeply and slowly through your mouth as the aerosol begins to flow. Hold your breath for several seconds, then exhale slowly through the mouthpiece.
  - b. If mask is used, wear the mask and position it over the mouth and nose. As aerosol begins to flow, inhale deeply and slowly through your mouth. Hold your breath for several seconds then exhale slowly.
14. After the treatment is complete, switch off the nebulizer by pressing the On/Off switch and then unplug the unit.
15. Clean the nebulizer according to the "CLEANING" section in the manual.



NOTE: Special care is needed to prevent spilling the medication when attaching the Air Tube (i.e. keep the nebulizer kit upright).

## CLEANING THE NEBULIZER SET

**CAUTION:** To prevent electric shock, DO NOT DISASSEMBLE and never immerse the nebulizer in water or other liquid or place it under running water. Always disconnect the unit from mains before you start to clean it. It is recommended to clean all parts (except the air tubing and nebulizer) after every use.

- Switch off the nebulizer by pressing the On/Off switch "A1".
- Unplug the nebulizer from the mains.
- Disconnect the Air Tubing and set it aside.
- Disassemble mouthpiece parts or mask from the nebulizer set.
- Open Nebulizer Set by turning the nebulizer cap counter-clockwise.
- Discard the remaining medication in the nebulizer cup.
- Wash all items, except tubing and nebulizer, in clean water and non lemon type dishwashing detergent solution. Rinse thoroughly with warm water to remove the detergent residue. Air dry or hand dry in a clean environment.
- When dry, reassemble nebulizer and store the unit.
- Never use boiling water to clean any parts.
- Never use hi-temperature sterilizing for disinfection (e.g. baby bottle sterilizer).
- When needed, only clean the outside of the Air Tubing with dry cloth. Never try to clean the inner wall of the Air Tubing.

## NEBULIZER CLEANING

If the nebulizer is dirty, follow the step below:

- Ensure the switch is in the "Off" position and unplug the power cord from the mains.
- Wipe outside of the nebulizer with a clean, damp cloth.
- Never use detergent or corrosive substances to clean the nebulizer.
- It is recommended to clean the nebulizer every few days to keep it clean and dust free.

## STORAGE

- Store the nebulizer and accessories in a clean location.
- Keep the nebulizer out the reach of unsupervised infants and children. The nebulizer contains small pieces that can be swallowed.
- Do not store the Air Tube while there is moisture or medication remaining inside it.
- Clean and disinfect the nebulizer kit, mouthpiece or masks before using them for the first time after purchase. Also clean and disinfect the nebulizer kit if the device has not been used for a long period of time.

## DISINFECTION

Always disinfect the nebulizer set, mouthpiece and other nebulizer parts before using the nebulizer for the first time, after the last treatment of the day, or daily during normal use.

- Disconnect the Air Tubing and set aside.
- Clean the casing of the nebulizer and air connectors by using a soft cloth moistened with alcohol. Do not use abrasive cleaners. Dry the casing immediately using a soft clean cloth.
- Disassemble mouthpiece parts or mask from the nebulizer accessories set
- Using a clean container or bowl, soak all accessories item except Air Tubing in 75% alcohol or 3% hydrogen peroxide for 5 minutes or use a medical bactericidal disinfectant available through your provider.

NOTE: Alcohol is highly flammable; do not use alcohol in close vicinity of open fire; do not smoke.

- With clean hands, remove the accessories item from the disinfectant solution, rinse under clean water.
- Air dry or hand dry in a clean environment.
- When dry, reassemble the nebulizer and store for the next use.

## REPLACING THE FILTER

The nebulizer has an Air Inlet filter to remove airborne contaminants. On average, the Air filter requires regular replacement after every 60days. The nebulizer comes with a package of extra filters for this purpose. Check the Air Inlet filter at least once every two weeks. Following the below mentioned steps to check and replace the Air Filter when needed.

1. Hold the Air Inlet filter cover "A3" with your fingers and turn anti-clockwise to unlock it and then pull out.
2. Now you can see the Air Filter in the filter compartment. Remove the Air Filter from the filter compartment (if needed, you may use a toothpick to remove the old filter).
3. If change is required, insert a new Air Filter into the filter compartment and discard the dirty Air Filter, otherwise reinsert the original Air Filter into the filter compartment.
4. Insert the filter cover in position and turn clockwise to lock it in position.

NOTE: the Air Filter should be changed if significant dust is noticed around the middle of the Air Filter.

## SERVICE AND CUSTOMER CARE

1. If the cord is damaged, it must be replaced by an Authorized Service Centre.

NOTE: The compressor uses an automatic reset thermal limiter that shuts off the nebulizer if the motor is overheated due to misuse, abuse or abnormal operation. The nebulizer will restart when the motor cools to an acceptable level.

2. If the nebulizer fails to operate, unplug the unit for 15minutes, plug in and try again. If the problem persists, check the "TROUBLE SHOOTING" section. If problem still persists, then contact Authorized Service Centre.

## TROUBLESHOOTING

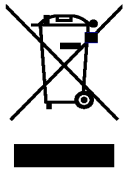
Nebulizer not work at all	Check that the power cord is connected to the nebulizer and plugged in the mains. Check the fuse in the plug if there is any.
Nebulizer is noisy	Check that the filter is locked correctly

## PRODUCT FEATURES & SPECIFICATIONS

<b>Dimensions</b>	Approx: 220(L) X 160(W) X 116(H) mm
<b>Weight</b>	1.8 kg
<b>Electrical</b>	220-240V ~ 50Hz
<b>Power</b>	80VA, MAX 2.5A
<b>Continuation of Operation Time</b>	≤30 mins / operation
<b>Nebulizer Rate</b>	0.3 - 0.4ml / min. Nebulizer rate may vary with different medication used. Especially suspensions and high viscosity medications may have a big influence on this specification. See drug supplier's data sheet for details
<b>Particle Size (NaCl Saline)</b>	0.0 - 5.0µm >86% Particle size may vary with different medication used. Especially suspensions and high viscosity medications may have a big influence on this specification. See drug supplier's data sheet for details
<b>Medication Cup Capacity</b>	6ml ( cc) max.
<b>Appropriate Medication Qty</b>	2ml - 6ml (cc)
<b>Operation Condition</b>	Temperature : 41°F - 95 °F / 5°C - 35°C Relative humidity :30-85% RH
<b>Storage Condition</b>	Temperature :-4°F - 131°F / -20°C - 55°C Relative humidity :10-95% RH

## SAVE THESE INSTRUCTIONS

### Environment friendly disposal



You can help protect the environment!  
Please remember to respect the local regulations: hand in the non-working electrical equipments to an appropriate waste disposal center.



=Type BF



=class II



=Attention, consult accompanying documents



= Do not immerse in water



0473 CE Mark: conforms to essential requirements of the Medical Device Directive 93/42/EEC as amended by 2007/47/EC.



Tai Yu International Mfy. Ltd.  
South Seas Center, Tower II, 8/F1., Unit 804 & 805A, 75 Mody Road, TST East, Kowloon, Hong Kong.

EU-representative:

P-W-Consult

Bitterstrasse 90, Koeln 50769, Germany

The MEDICAL DEELECTRICAL EQUIPMENTS needs special precautions regarding EMC and needs to be installed and put into service according to the EMC information provided in the ACCOMPANYING DOCUMENTS.

Portable and mobile RF communications equipment can affect MEDICAL ELECTRICAL EQUIPMENT.