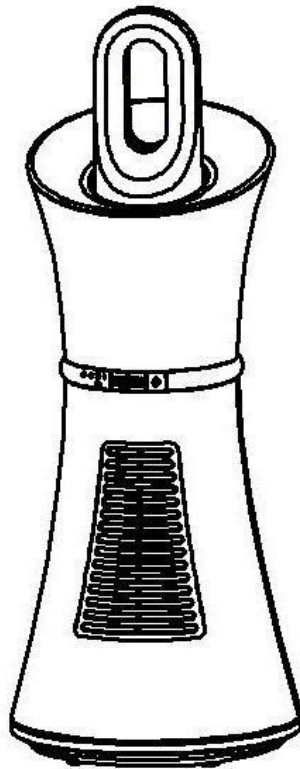




BABYBELLE

**2-in-1 Fan (Air Purifier) & Hand-Held Vacuum
Cleaner
Model No.: BBF01**



Specification	
Fan (Air Purifier)	220-240V~ 50-60Hz 35W
Hand-Held Vacuum Cleaner	DC 4.8V 10W

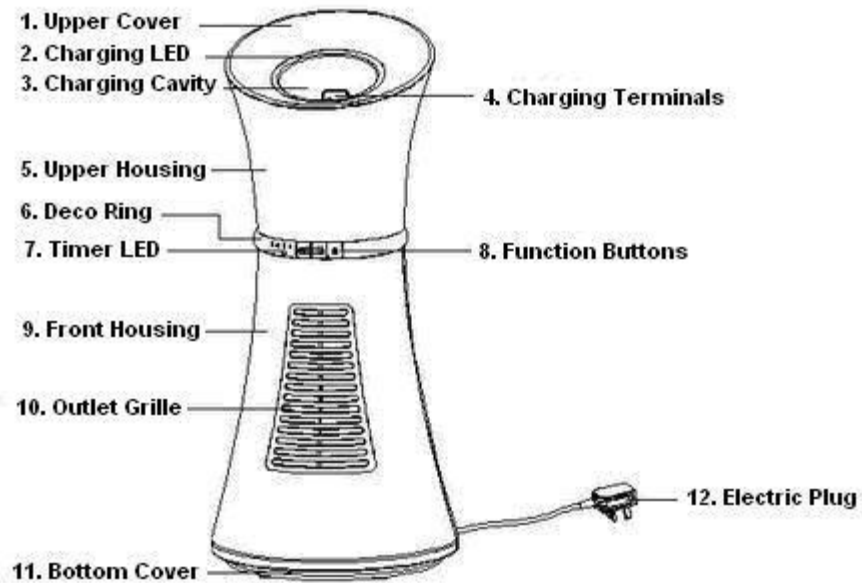


Fig. 1 Fan (Air Purifier Part) - Front View

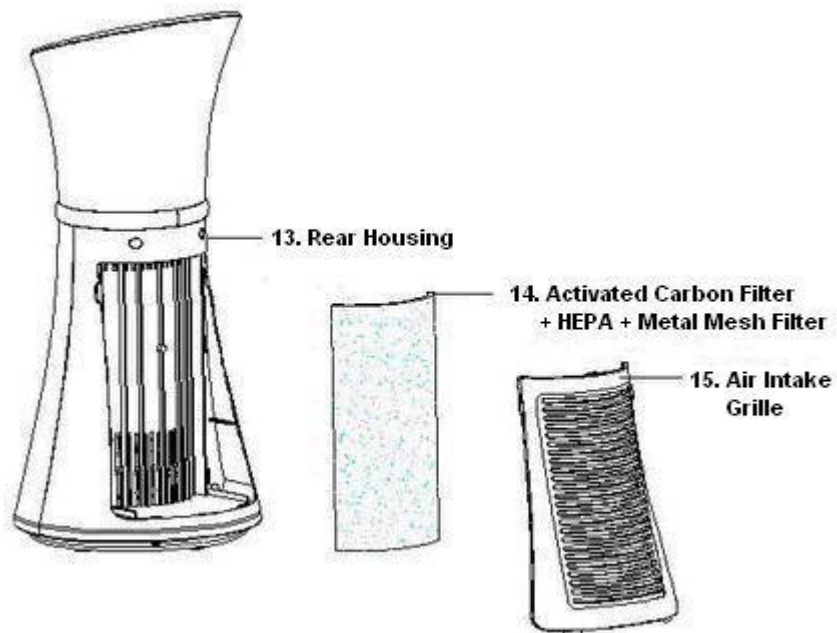


Fig. 2 Fan (Air Purifier Part) – Rear View

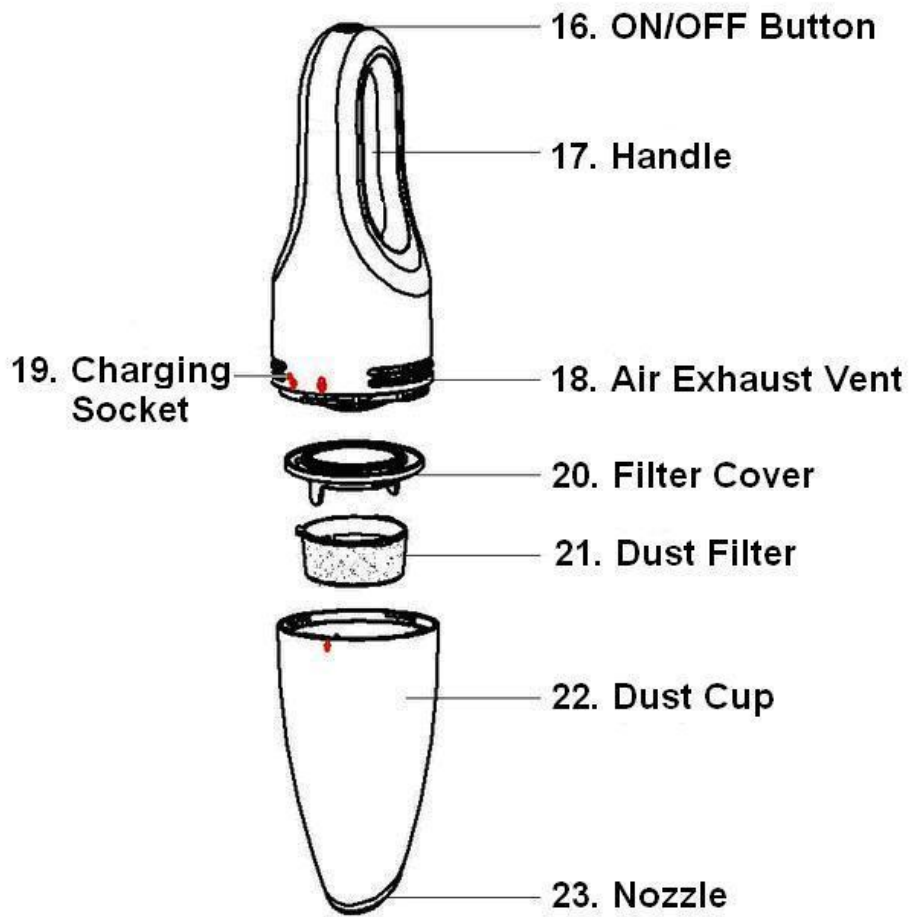


Fig 3. Vacuum Cleaner Part

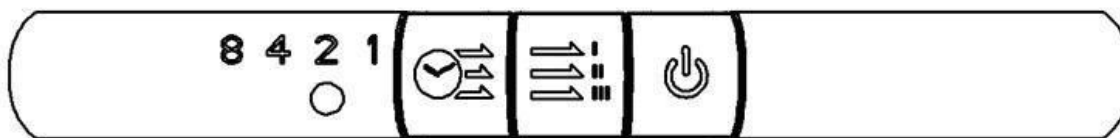
Safety Precautions

1. Read the safety instructions carefully before using the appliance for the first time and retain them for future reference.
2. Before plugging in the appliance, check that the electrical rating shown on the rating plate corresponds with your house electricity supply.
3. If the power cord is damaged, it must be replaced by the manufacturer or its service agents or qualified electricians in order to avoid a hazard.
4. Switch off the appliance before unplugging it from the mains. Do not touch the plug with wet hands to avoid risk of electric shock.
5. Do not insert fingers or small objects into the grille during operation to reduce the risk of injury to persons.
6. Do not use the appliance on an inclined surface greater than 10°, or in a lay-down position.
7. Do not spray insecticide near the air inlet or outlet of the air purifier. Avoid putting the air purifier in area where the air passageway may be blocked.
8. The air purifier should not be used in area with high temperature (higher than 40 °C) and high humidity, say bathroom. Also avoid using it in dusty or oily area.
9. Do not put the appliance, the power cord or the plug into water or any other liquid.
10. The appliance is designed for household use only. Use the appliance with its intended use.
11. Unplug the appliance before storing, assembling and cleaning the components of the appliance.
12. This appliance is not intended for use by persons (including children) with reduced physical sensory or mental capabilities, or lack of experience and knowledge, unless they have been given supervision or instruction concerning use of the appliance by a person responsible for their safety.
13. Children should be supervised to ensure that they do not play with the appliance.
14. Do not immerse in water for cleaning.

Using your Clean Tower

Fan (Air Purifier)

1. Before using the air purifier, check that the filters are installed in the following order:
 - i. Activated Carbon Filter → ii. HEPA Filter → iii. Metal Mesh Filter → iv. Air Inlet
2. Buttons

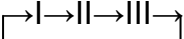


Timer Indicator Timer Speed On/Off

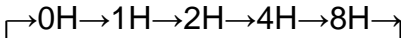


ON/OFF Button: Press once to turn the air purifier ON. The default speed is Speed I. Press again to turn it OFF.



Speed Button: Press the Speed Button to advance the speed by one setting. When the air purifier is at Speed III, pressing the Speed Button will return the speed setting to Speed I. It follows the cycle like this 



Timer Button: Press the Timer Button to select the pre-set time, in mode of 0H, 1H, 2H, 4H, 8H. It follows the cycle like this 

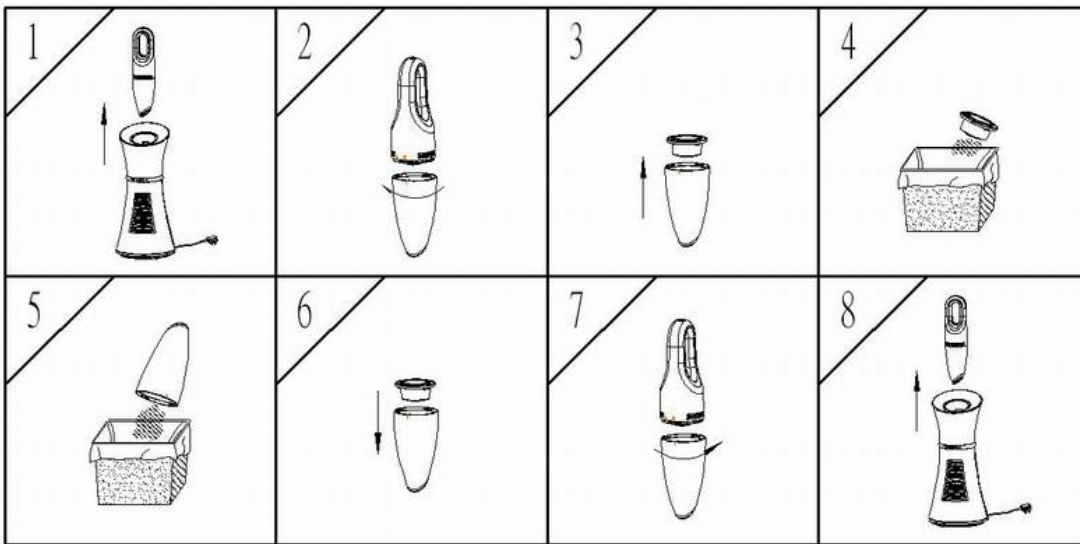
3. Function of air purifier

Four layers of filter can clean the air with their respective function:

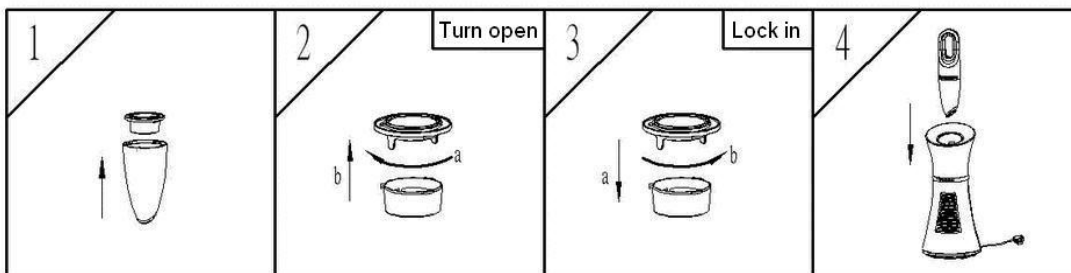
- a. Air Intake Grille can block the large particles from getting into the air purifier directly
- b. Metal mesh filter filters out the dusts and air pollutants
- c. Activated carbon filter removes contaminants, impurities and VOCs from the air.

Hand-held Vacuum Cleaner

1. Charging / Stand-by Mode
 - a. The charging cavity is located at the top part of the product. Place it on a flat horizontal surface when charging.
 - b. Do not charge the vacuum cleaner with other chargers.
 - c. For the first use, charge the vacuum cleaner continuously for 4 hours.
 - d. Switch off the vacuum cleaner during charging.
 - e. When the vacuum cleaner is placed in the charging cavity, the charging indication LED will light up (red – charging / blue – charging completed).
2. When the vacuum cleaner is charged, take out the vacuum cleaner and push the ON/OFF Button at the back side of the handle, your vacuum cleaning is ready to use.
3. Follow the procedures shown below for dust disposal



4. The Dust Filter is not disposable type and it can be used repeatedly.



Care and Maintenance

1. Turn off and unplug air purifier before cleaning or replacing filters.
2. Gently push the release tabs on the Air Intake Grille and pull backward to remove it.
3. Remove the filters and put them aside.
4. Clean the air purifier & vacuum cleaner with a soft, damp cloth.
5. Use mild soapy water to clean the product, do not use bleach or other abrasive detergents.
6. Put the product in cool & well ventilated area until it is thoroughly dry.
7. Reassemble the filters in order as mentioned in previous session.
8. The product is now ready to use or for storage.

Troubleshooting

Problem	Probable Cause	Correction
Air purifier does not run.	The power cord is not yet plugged into the socket, or it is not plugged in securely.	Plug in the power cord to the socket securely again.
There is abnormal noise when operating the air purifier.	Foreign material is trapped and in touch with the rotating fan.	Unplug the unit. Check whether is anything entangled in the grilles.
Vacuum cleaner does not run.	<ol style="list-style-type: none"> 1. Power not enough 2. Bad contact of charging terminals 3. Battery cannot be charged 4. Machine malfunctions 	<ol style="list-style-type: none"> 1. Charge the vacuum cleaner until the charging LED turns blue. 2. Clean the charging terminals. 3. Contact Authorized Service Agent. 4. Contact Authorized Service Agent.
Low suction of vacuum cleaner	<ol style="list-style-type: none"> 1. Battery flat 2. Dust Cup is full 3. Dust Filter is blocked 	<ol style="list-style-type: none"> 1. Charge the vacuum cleaner until the charging LED turns blue 2. Empty the Dust Cup 3. Clean the Dust Filter
Dust overflows	<ol style="list-style-type: none"> 1. The Dust Cup is full 2. The Dust Filter is blocked 	<ol style="list-style-type: none"> 1. Empty the Dust Cup 2. Clean the Dust Filter
Battery cannot be charged	<ol style="list-style-type: none"> 1. The ON/OFF switch of the vacuum cleaner is in the ON status 	<ol style="list-style-type: none"> 1. Push the ON/OFF switch again to switch OFF the vacuum cleaner and proceed charging.

Correct Disposal of this product



This marking indicates that this product should not be disposed with other household wastes throughout the EU. To prevent possible harm to the environment or human health from uncontrolled waste disposal, recycle it responsibly to promote the sustainable reuse of material resources. To return your used device, please use the return and collection systems or contact the retailer where the product was purchased. They can take this product for environmental safe recycling.

Manufacturer : Tai Yu (Dongguan) Electrical Co., Ltd.
 Dong Xing Industrial Park, Dong Keng Town,
 DongGuan City, Guang Dong Province,
 China.